

This instruction sheet provides instructions for installing our Direct Certification Automated FTP software to your Systems Design Food Service system.

There are four basic steps to be performed:

1. Download the software installer
2. Run the software installer

Step One – Download the software installer

To install our Direct Certification Automated FTP software you will first need to download it. You may download the installation package from the Systems Design support webpage. Direct your web browser (Internet Explorer) to <http://www.systemsdesignusa.com>, then click on any link to the **Support** webpage.

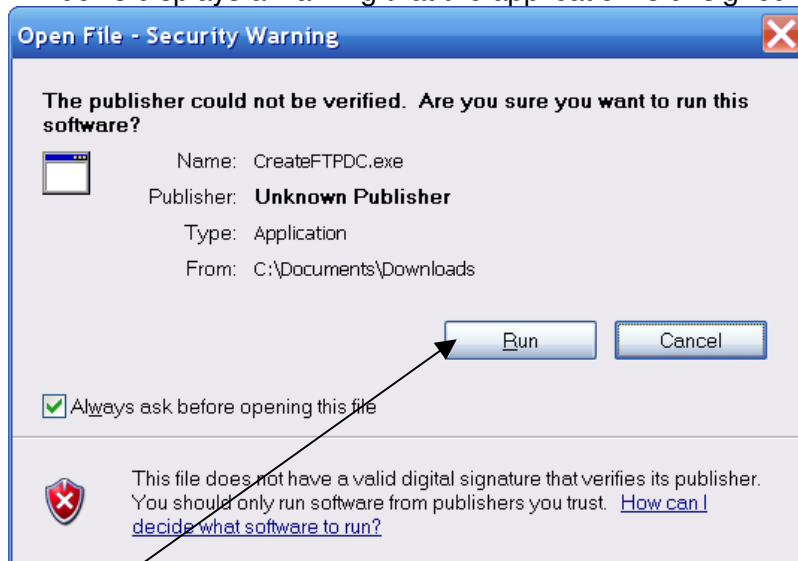
In the section labeled **Software Downloads**, click the entry labeled **D/C Automated FTP** to download the installation setup package. Your system should give options to “Open” or “Save” the download file. We recommend you select the **Save** option in order to save the installation file on your Windows Desktop so you may easily locate the file in the next step.

When the file is downloaded you may proceed to the next step or wait until a later time to perform the installation.

Step Two – Install the Direct Certification Automated FTP software

Close all open programs and windows, then locate the installation file on your desktop or navigate to the location where you saved the installation file. Double-click the icon to launch the Direct Certification Automated FTP software installation program [CreateFTPDC.exe].

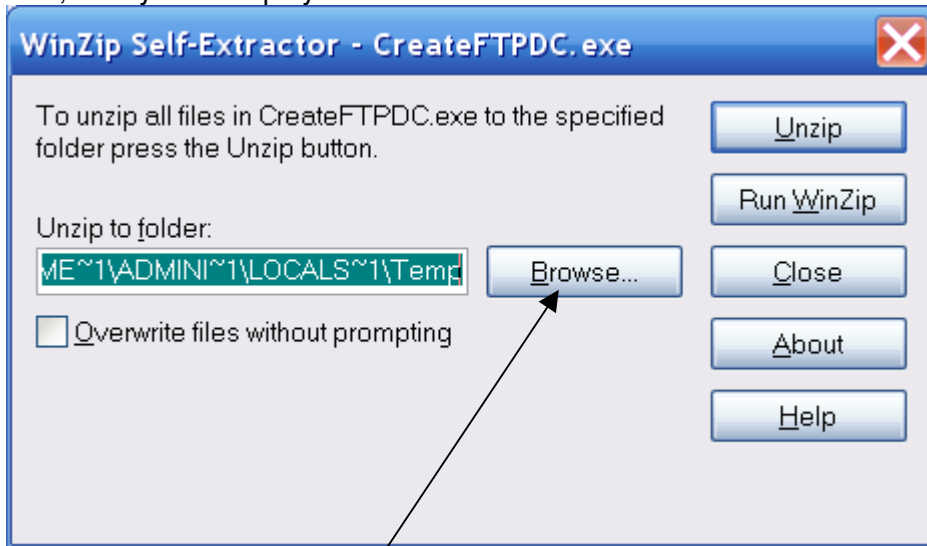
Windows displays a warning that the application is unsigned by a publisher.



Click Run to begin the installation.

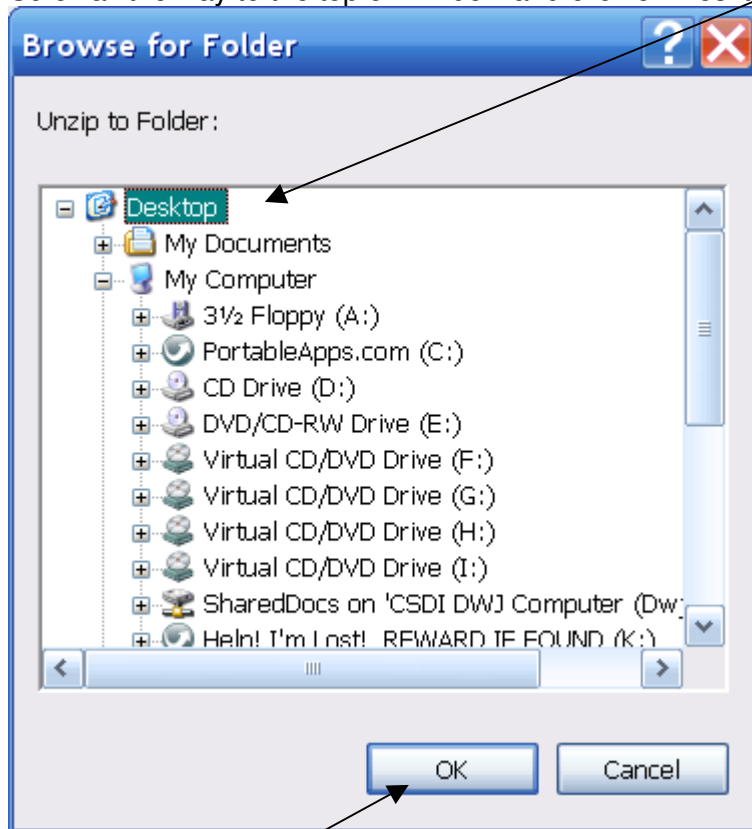
7/6/2009

Next, the system displays a self-extractor.

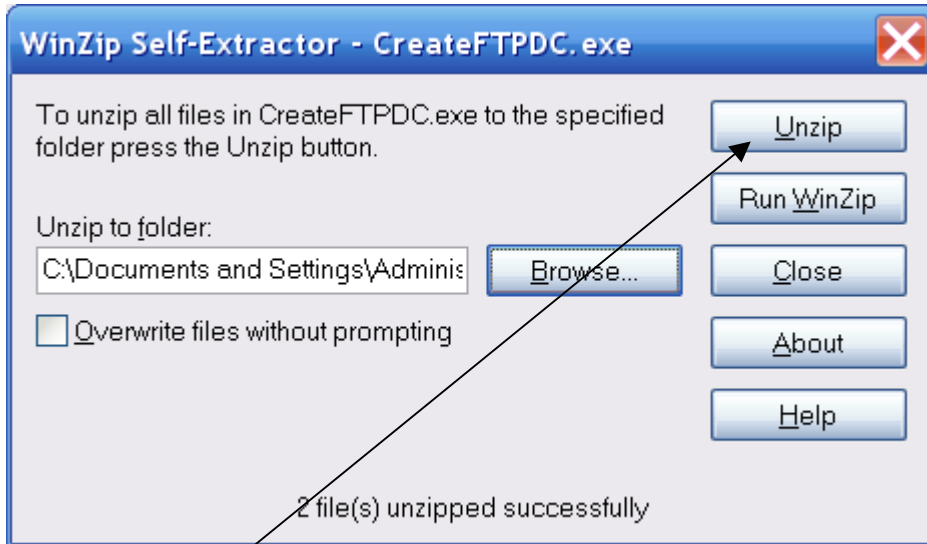


Click on the Browse button:

Scroll all the way to the top of Window and click on Desktop:

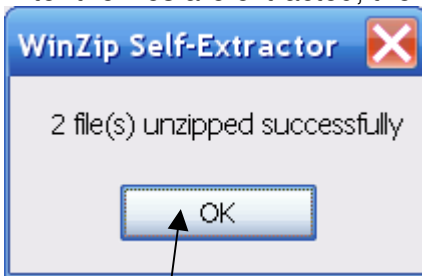


Click on OK.



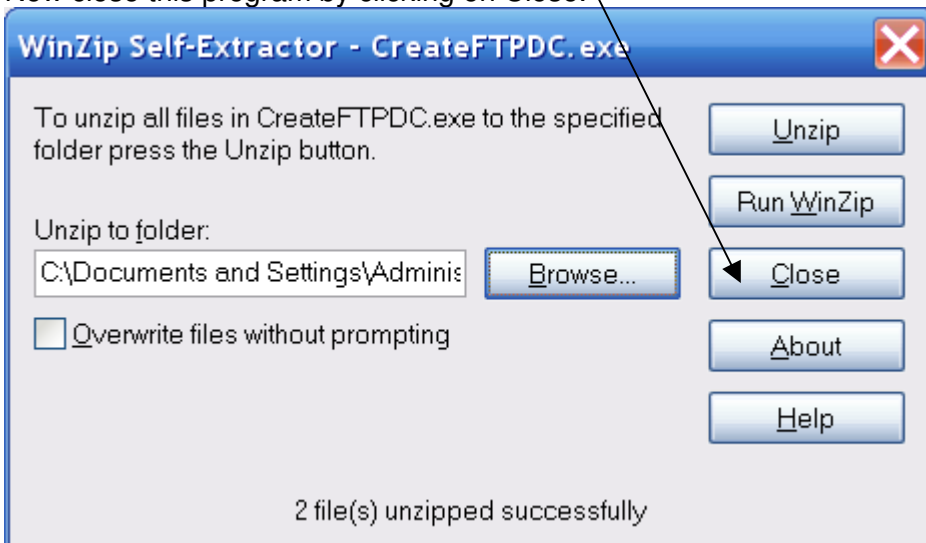
Click on Unzip.

After the files are extracted, the systems displays:



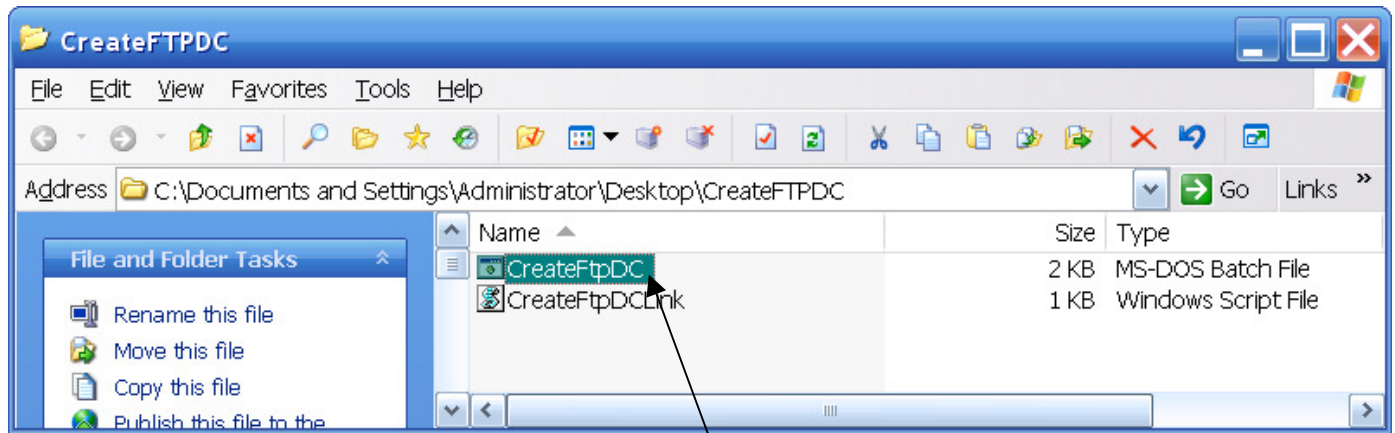
Click on OK.

Now close this program by clicking on Close.



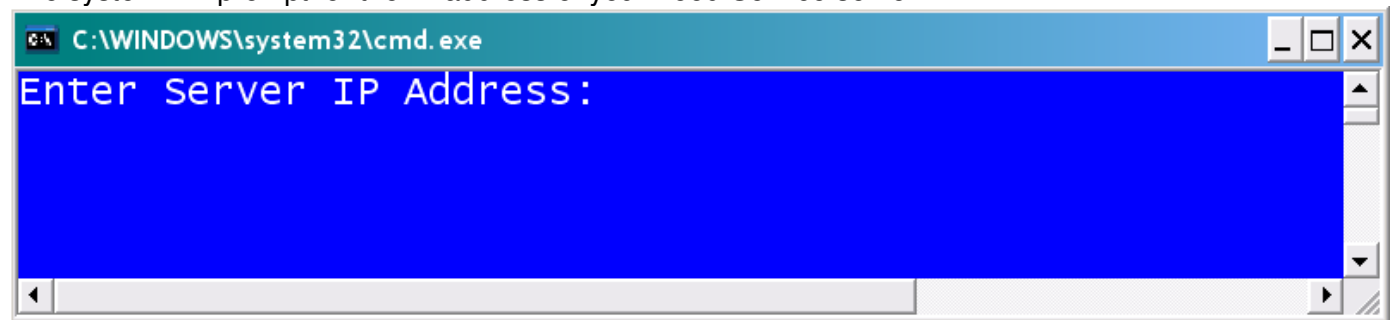
You will have a new file folder icon on your desktop labeled **CreateFTPDC** double-click on this file folder to open it.

7/6/2009



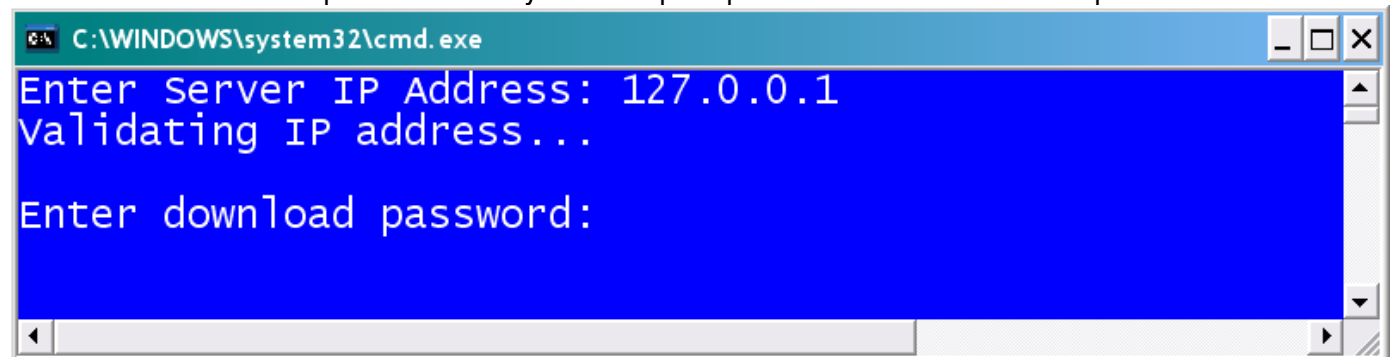
Double click on CreateFtpDC to begin the installation.

The system will prompt for the IP address of your Food Service server.



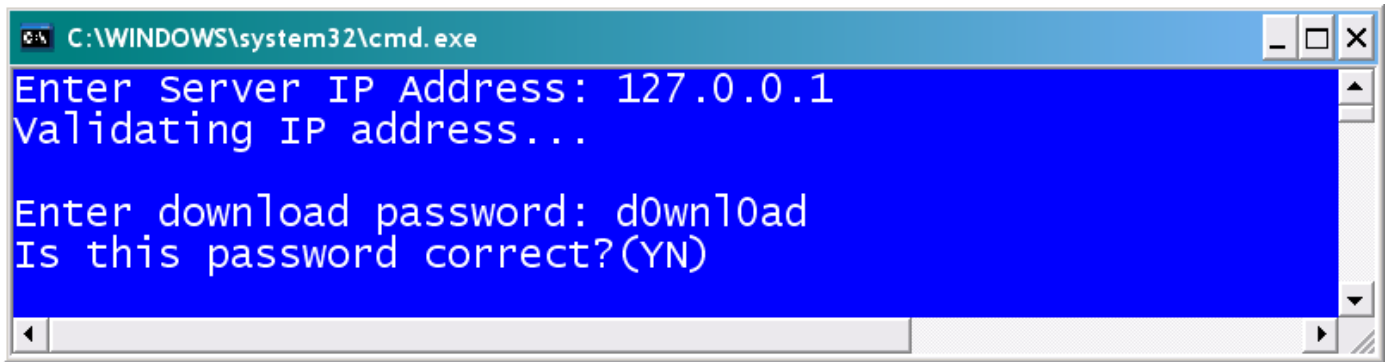
Enter the IP Address. If you are unsure of this entry, please contact Systems Design support team.

After you have typed the IP address and pressed [ENTER], the system will validate the address and continue the installation process. The system will prompt for the server's download password.



Enter the server's download password. The system will ask you to verify the password is correct.

7/6/2009

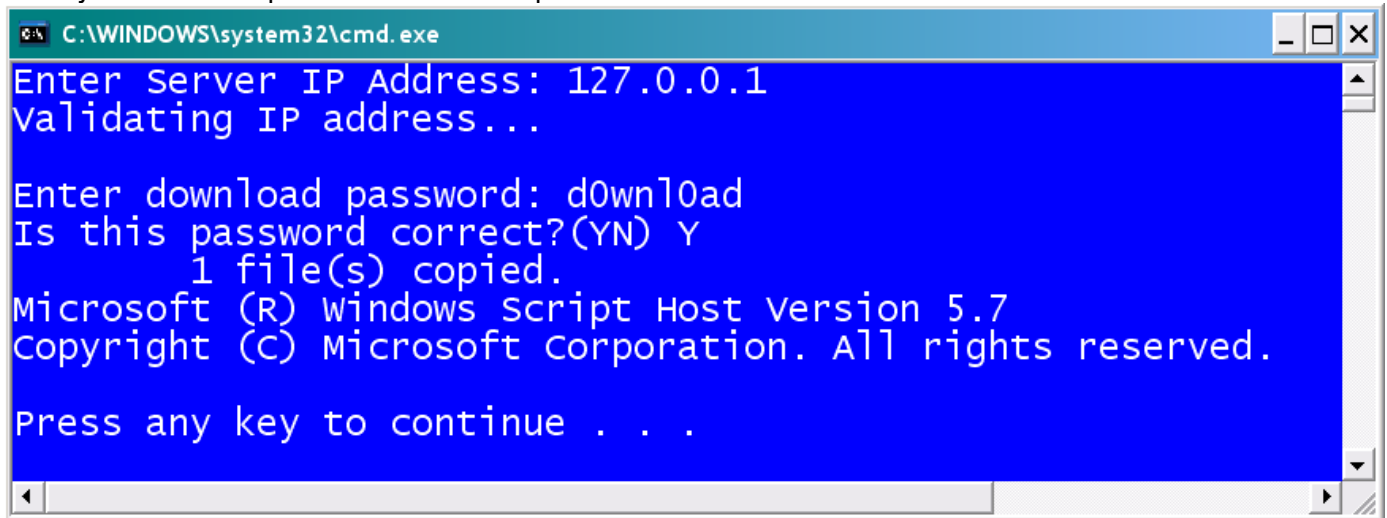


```
C:\WINDOWS\system32\cmd.exe
Enter Server IP Address: 127.0.0.1
Validating IP address...

Enter download password: d0wnl0ad
Is this password correct?(YN)
```

Enter **Y** if the password is correct; otherwise enter **N** and you may enter the correct password.

The system will complete the installation process.



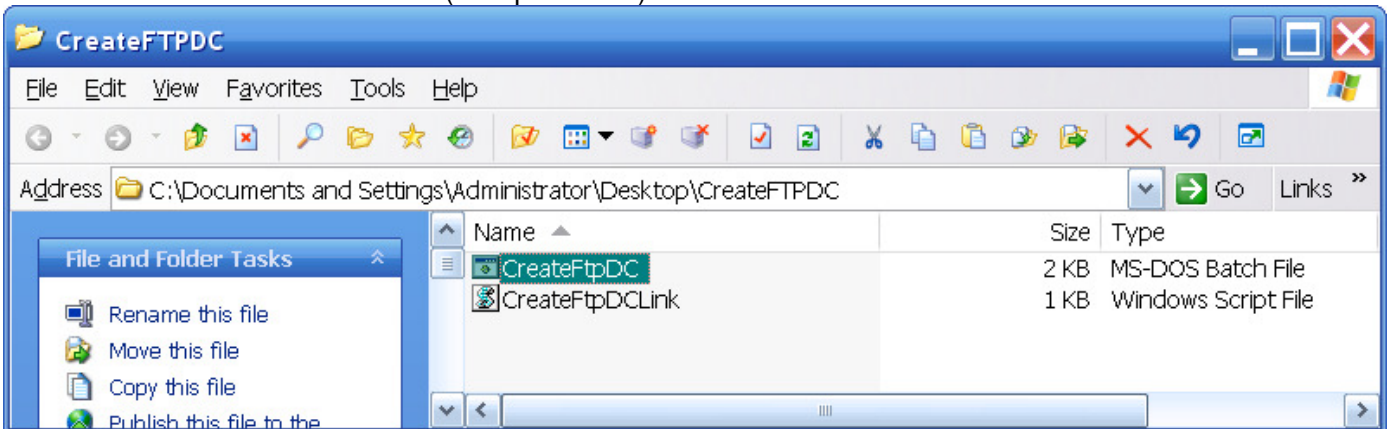
```
C:\WINDOWS\system32\cmd.exe
Enter Server IP Address: 127.0.0.1
Validating IP address...

Enter download password: d0wnl0ad
Is this password correct?(YN) Y
      1 file(s) copied.
Microsoft (R) Windows Script Host Version 5.7
Copyright (C) Microsoft Corporation. All rights reserved.

Press any key to continue . . .
```

Press [ENTER] to exit.

Close the CreateFTPDC window. (Sample below)



Delete the CreateFTPDC file folder from your Desktop.

7/6/2009



Delete the CreateFTPDC application from your Desktop.

You will see there is a new icon on your Desktop named **FTP Direct Cert**. This is the icon that transfers your downloaded copy of the CNPIMS comma delimited file to the Systems Design server.

