

Since RSCCC does not currently provide a way of automating the extract process from their system some of our clients have looked for ways to automate this process. Becky Smith of Cushing ISD wrote these instructions originally.

These instructions were written with the assumption that the install is familiar with installing applications on Windows. If you need further assistance please contact your technology department for support.

This method requires the use of a third-party program named WinMacro by Senthil Kumar. Please be aware there is more than one program with this name. We recommend you download it directly from the author's website at [http://geocities.com/win\\_macro/index.html](http://geocities.com/win_macro/index.html)

## Installing WinMacro

1. Launch Windows Explorer or a similar utility
  - a. Click on Start
  - b. Click on Run
  - c. Type `explorer C:\` in the Open box
  - d. Click on OK
2. You should be in C:\
3. If you do not already have a folder called C:\Cafeteria create one
4. Browse to C:\Program Files
5. Create a new folder called WinMacro
6. Download WinMacro from [http://geocities.com/win\\_macro/index.html](http://geocities.com/win_macro/index.html).
7. Extract the content of the file you downloaded to the WinMacro folder you created
8. You may want to create shortcuts to the WinMacro program on your desktop or Quick launch Toolbar

## Creating the WinMacro Script

1. Run the WinMacro utility
2. Click the Browse button
3. Browse to the Cafeteria folder
4. Type `cafexport` as the file name in the WinMacro file name box
5. Click the Record button

**NOTE:** It is *very important* that you follow these instructions as written using the mouse and keystrokes as indicated if you want the process to work repeatedly. If you were to use your mouse instead of following the instructions, later when someone repositions or resizes the RSCCC window then the macro will no longer work because the buttons will not be at the appropriate locations.

6. Click Start
7. Click Run

8. Type the location and name of the RSCCC program. Usually it is:  
C:\RSCCC2K>Login\login.exe
9. Press Enter
10. Type your RSCCC user name
11. Press the TAB key
12. Type your RSCCC password
13. Press Alt+C to choose the application
14. Use the down arrow on the keyboard to select Registration
15. Press Enter
16. Press Alt+U to open the Utilities menu
17. Press C to select Cafeteria
18. Press Enter
19. Press Alt+O to open
20. Hold down the Shift key and Press the TAB key until the radio buttons next to “extract all” and “all campuses” are selected
21. Press Alt + X to execute
22. Press TAB
23. Press the A key on the keyboard to choose “All Files”
24. Hold down the Shift key and Press the TAB key to move back to the file name box.
25. Type C:\RSCCC2K>Login\CAFEXP.ALL
26. Press Alt + S
27. Press Enter to select OK
28. Press Alt + F, then Press the X key to exit
29. Press Alt + F, then Press the X key to exit
30. Press Alt + F, then the C key to Close the Windows Explorer window
31. Press the Break key on the keyboard (upper right corner – this ends the recording)
32. Optionally you may verify the WinMacro file was created by:
  - a. Click on Start
  - b. Click on Run
  - c. In the “Open” box, type C:\Cafeteria and click OK (A Windows Explorer Window will open in the C:\ Cafeteria directory.
  - d. Click on View
  - e. Click on Details
  - f. Click on View
  - g. Click on Arrange Icons By
  - h. Click on Name (The files should be arranged alphabetically now)
  - i. Check if a file named `cafexport.winmacro.log` exists

## **Verifying that WinMacro properly executes the RSCCC Extract Task**

1. Delete any existing CAFEXP.ALL or CAFEXP.ALL.TXT files
  - a. Click on Start
  - b. Click on Run
  - c. In the “Open” box, type C:\RSCCC2K\LOGIN and click OK (A Windows Explorer Window will open in the C:\RSCCC2K>Login directory.
  - d. Click on View
  - e. Click on Details
  - f. Click on View
  - g. Click on Arrange Icons By
  - h. Click on Name (The files should be arranged alphabetically now)
  - i. Check if a file named `CAFEXP.ALL` or `CAFEXP.ALL.TXT` exists (depending on your system)
  - j. If the file exists, delete it.

2. Test the WinMacro script

- a. Click on Start
- b. Click on Run
- c. In the "Open" box, type the following (it will all be on a single line)

```
"C:\Program Files\winmacro\WinMacro.exe" c:\cafeteria\cafexport.winmacro.log
```

- d. Click on OK
- e. Watch for any errors during the playback
- f. If there are no errors, go to Step 1 above and verify a new CAFEXP.ALL or CAFEXP.ALL.TXT was created
- g. If there was no file created, then there is an error in your Macro.

3. Change the entry in the Run box to: (it will all be on a single line)

```
"C:\Program Files\winmacro\WinMacro.exe" c:\cafeteria\cafexport.winmacro.log
```

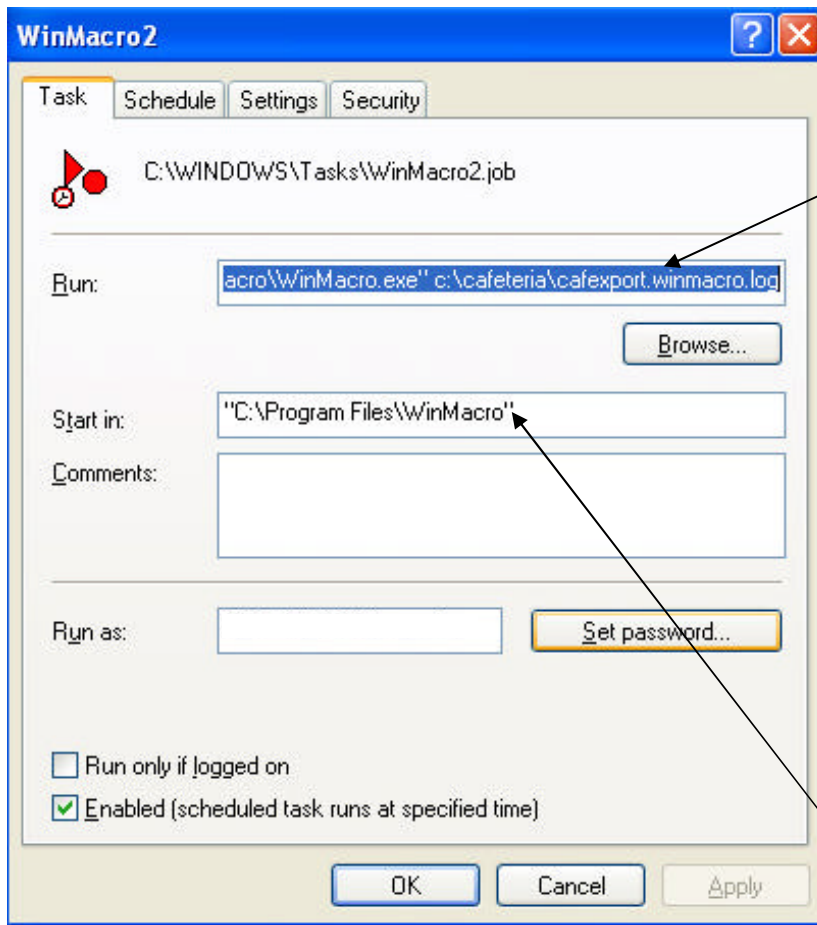
4. Be sure to include the quotes and be careful to leave a space between the executable statement

## Scheduling the RSCCC Extract Task

1. Click on Start
2. Click on Control Panel
3. Double-click Scheduled Tasks
4. Select Add Scheduled Task
5. Click Next
6. Browse to C:\Program Files\WinMacro\winmacro.exe
7. Choose to Perform the task Daily.
8. Click Next
9. Enter 11:05 PM for the start time and leave today's date as the default.
10. Click Next.
11. Enter your User name and password for the computer you're using.
12. Click Next
13. Check the Open Advanced Properties box
14. Click Finish.
15. Change the entry in the Run box to: (it will all be on a single line)

```
"C:\Program Files\winmacro\WinMacro.exe" c:\cafeteria\cafexport.winmacro.log
```

16. Be sure to include the quotes and be careful to leave a space between the executable statement and the file location. (see image on next page)



Step 20-21

17. Type "C:\Program Files\WinMacro" (including quotes) in the Start in: box. Click OK.

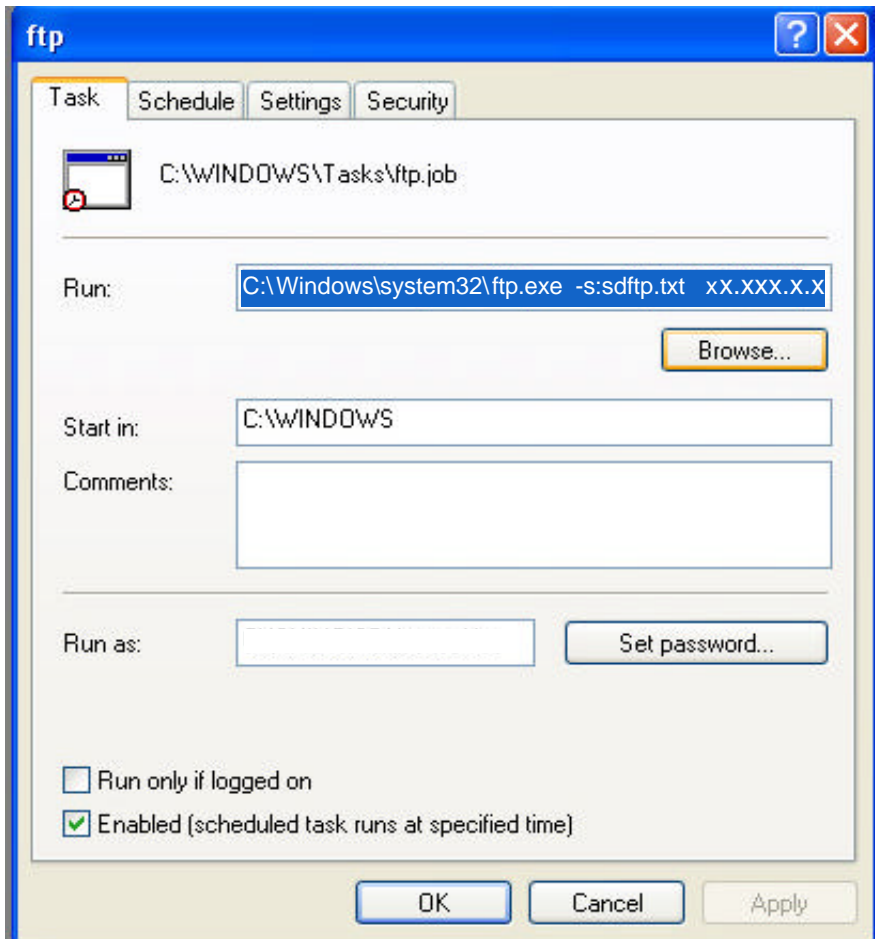
## Scheduling the RSCCC Export

1. Click on Start
2. Click on Control Panel
3. Double-click Scheduled Tasks
4. Choose Add Scheduled Task
5. Click Next
6. Browse to C:\Windows\System32
7. Type [ftp.exe](#) in the file name
8. Click OK
9. Select Perform task Daily.
10. Click Next
11. Enter 11:15 PM for the start time and leave today's date as the default
12. Click Next
13. Enter your Window's logon User name for the computer you're using
14. Enter your Window's logon Password for the computer you're using
15. Click Next
16. Checkmark the Open Advanced Properties For This Task box
17. Click Finish
18. Change the entry in the Run box to:

```
C:\Windows\system32\ftp.exe -s:sdftp.txt xx.xxx.x.x
```

substituting the IP address of your Systems Design Unix server for the x's. Be careful to leave a space after `ftp.exe` and after `.txt` (see image below)

19. Click OK



**TIP:** Becky said it is best to exit all windows before you leave for the day. She also disabled the screensaver. You should be able to logoff the windows unit (Start->Logoff) since you provided Scheduled Tasks your login information.